



A world safe from electric fire

Safe work! Safe going out!

Attachable fire extinguisher

Automatic fire extinguishing patch & tape



Patent Registration · Fire Extinguishing Test Report · Fire Prevention Part Patent · Excellent Invention Priority Purchase

Quick Stop Fire?

- ▶ As an automatic fire extinguisher for small spaces, it is composed of fire extinguishing tape and fire extinguishing patch. It is a product that has been selected for patent registration, fire extinguishing test report, fire prevention part patent, and excellent invention priority purchase.
- ▶ In the event of a fire, the extinguishing agent is ejected from the micro-extinguishing capsule at around 110 degrees Celsius, and it automatically extinguishes the fire within 0.5 to 2 seconds.
- ▶ It is an eco-friendly fire extinguishing agent that suppresses fire and prevents the spread of fire, delays the continuous fire spread, and does not cause any pollution after the fire is extinguished.
- ▶ By extinguishing fires caused by sparks, short circuits, overheating, overheating, overheating, moisture, dust, etc. in outlets, plugs, and indoor distribution boards at an early stage, to prevent large-scale fires and create a safe world from electric fires such as safe work and safe going out.

N Quick Stop Fire

<https://smartstore.naver.com/quickstop119>

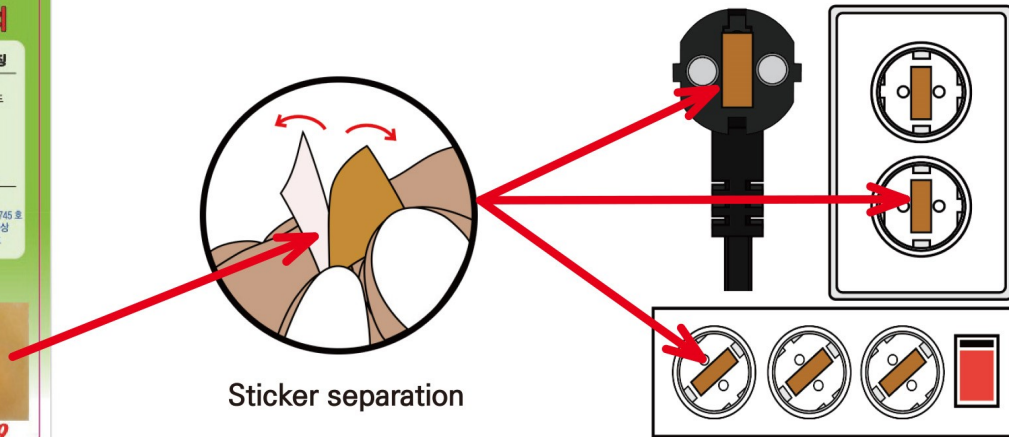
Y Quick Stop Fire

<https://www.youtube.com/watch?v=SCvdBHqOSQk>

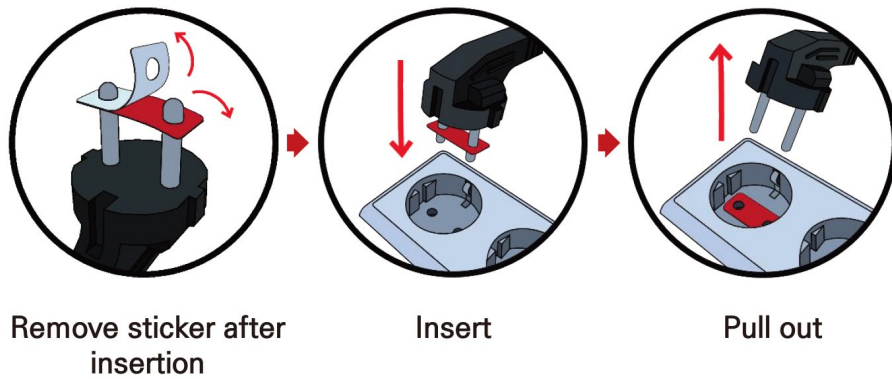




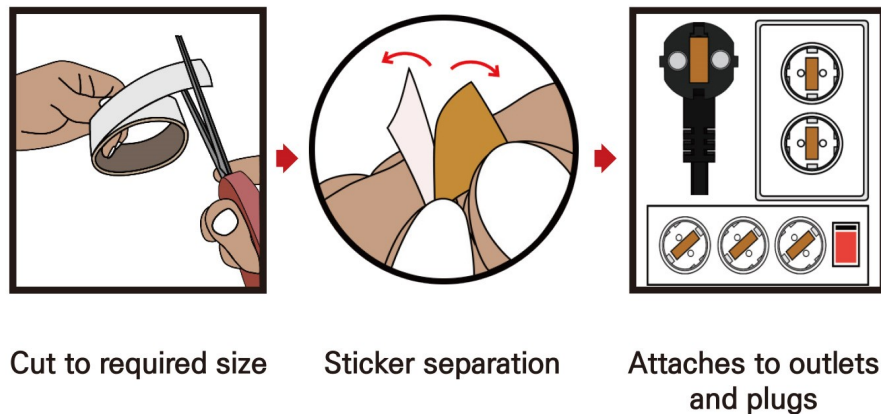
Quick Stop Fire(SP10-1)



Quick Stop Fire(SP10-2)



Quick Stop Fire(SP10-3)



Quick Stop Fire(SP10-20)

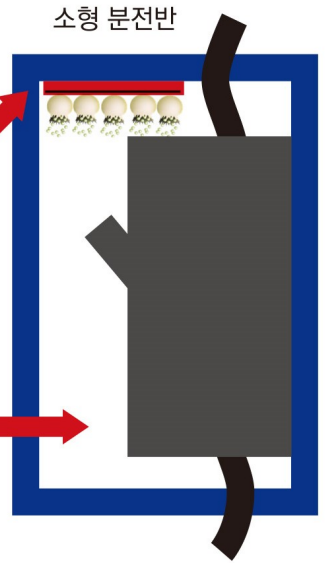


(SP10-10)


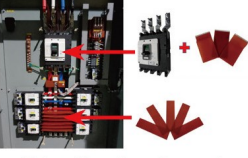

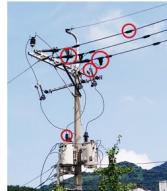
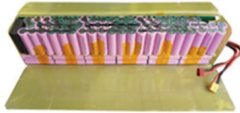
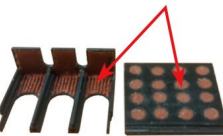
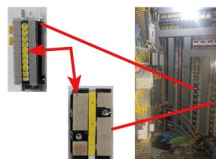

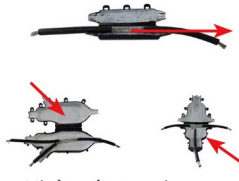

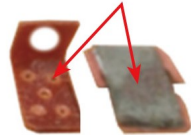






Quick Stop Fire(SP10)

Fire control space(L) = the whole white part



Quick Stop Fire(SP-Roll tape)

Electrical parts	Distribution board	Electrical appliances that can't be installed with fire extinguishers	Electrical appliances that can't be extinguish a fire as soon as possible	Other electronics
 <p>Wire terminal</p>	 <p>Distribution board</p>	 <p>Fan</p>		 <p>Lithium battery cover</p>
 <p>Circuit breaker layer</p>	 <p>Switchboard</p>	 <p>Ventilator</p>	 <p>High voltage wire cover</p>	 <p>Smartphone battery</p>
 <p>Fire extinguisher cover</p>	 <p>Motor cover</p>	 <p>Outdoor air conditioner</p>	 <p>Transformer terminal cover</p>	 <p>Laptop battery</p>

